

MONTHLY Circuit News

August 2025

New Circuit details

From Sept, when we are part of the new West Midlands District our circuit number will be 3/8
3 for the district, 8 for our circuit.

John 3:8 makes it memorable "The wind blows wherever it pleases. You hear its sound, but you cannot tell where it comes from or where it is going. So it is with everyone who is born of the Spirit!"

Save The Dates!

Saturday 30th August 2025 3pm – 4:30pm

New West Midlands Launch and Welcome of New District Chair
Walsall Central Hall, Ablewell Street, Walsall WS1 2EQ

Thursday 4th September 2025 at 7pm

Welcome Service for Rev Becki Stennett
Coventry Central Hall, Warwick Lane, Coventry, CV1 2HA
with Bring and Share savoury snacks and cakes after the service

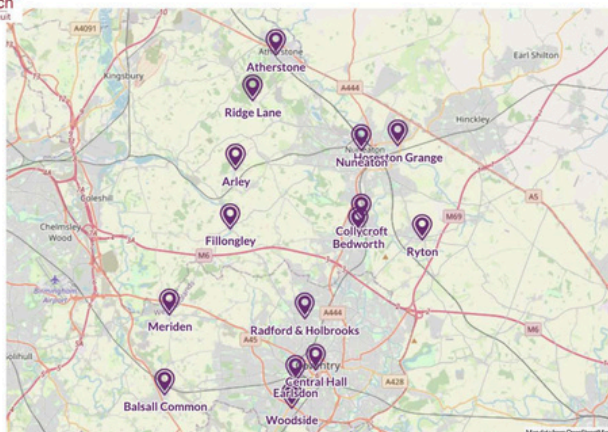


God of Mission,
Who alone brings growth to your
Church,
Send your Holy Spirit to give
Vision to our planning,
Wisdom to our actions,
Joy to our worship,
And power to our witness.
Help our church to grow in
numbers,
in spiritual commitment to You,
and in service to our local
community.
Through Jesus Christ our Lord
Amen

Prayer for Growth

Our new circuit prayer cards were given out at this Growth Morning and everybody should receive one for themselves for our personal prayers and it will show you, too, which churches make up this circuit.

Please ask each preacher to include the prayer in the church prayers every Sunday so that together we are asking God for guidance and vision in our life together as a circuit. If you would like the PPT version of the prayer and the map then please contact the office.



News from around the Circuit

A Methodist Way of Life at Balsall Common

Over the past months, work has been going on at Balsall Common to convert the stage into a storage area with mezzanine floor, meaning that we have more storage and the hall is tidier and safer for its users. The finishing touches have now been added in the form of new blinds and sound boards. The sound boards have been produced by a local firm and decorated with the 'underground map' showing the Methodist Way of Life. It shows hall users what is important to us as Methodists, and opens up opportunities for conversation on each of the stations and what they mean for us. This has already led to one conversation, and we hope for many more. Balsall Common will be doing a series on the Methodist Way of Life in services in the autumn.



And some Eco news - the curtains that used to be at the windows and on the stage have been lovingly re-worked into bags that we had available at our stall in the village Picnic in the Park. There are more to be sold - you can never have too many bags, so keep a look-out for someone with an armful of bags and a determined expression!

Open Gardens and Open Church at Meriden



On Sunday 6th July, Meriden welcomed over 100 visitors to the church garden, which had been opened up as part of the Village Open Gardens Day. With 17 gardens open in the village, visitors had a full day going from place to place, and were glad of a drink, and strawberries and cream, when they got to the Methodist Church. A team of welcomers were on hand to show them around the garden and tell them of its history, and how we are trying to use the garden to build friendships with local people, and we are hoping it will offer a peaceful place and a listening ear.

A hammock and a cloud-spotting guide helped people look at the different clouds in the sky; a booklet of reflections helped them calm down and use the garden for Christian meditation; and the reminder that God has created all things beautiful helped us all thank God for the garden and for nature. We have made many new contacts to build on for the future.



News from Nuneaton Methodist Church

English Conversation Lessons

At Nuneaton Methodist Church, with George our Community Development Worker, we have been running English Conversation lessons, with a local Council grant, and making new friends in that way. We are pleased that some people have started coming along to church and are beginning to volunteer too, at Nuneaton and Bedworth.

Please pray for this work.



Paul Spencer, member at Nuneaton Methodist Church, resident in Bulkington and business man in Bedworth, has been appointed as a trustee of the Nicholas Chamberlaine Trusts.

These trusts benefit thousands of children and older people in the area and we are delighted that Paul is able to represent his Methodist heritage by working in this capacity as a volunteer.

We would love to hear more about the volunteer work that you are all involved with. We are called to be 'salt in the earth'.

Please send us photos and news!

Here is Paul at 'Bun Day' in Bedworth!

New Member at Bedworth Methodist Church



Helen Jackson has joined Bedworth Methodist Church as a new member.

We are grateful for her cheerful support and her wonderful baking ability! As a wheelchair user

Helen is keen to help church's develop their disabled access helpfully, and has offered to do the necessary 'disabled access audit' which we should be doing around the circuit's churches.

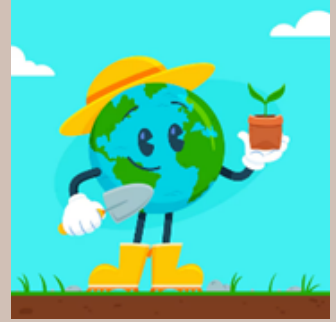
If your church needs this help please contact Rev Jill Marsh, to make contact and arrange this.

Thank you.

Eco News from across the Circuit



Please have a look on the Circuit Website at the [Eco page](#).



The Great Dishcloth knitting project!

Many dishcloths have been produced and given away. A current running total is::

Ryton 41, Woodside Avenue 44, Balsall Common 38, Fillongley 50, Meriden 30 and Earlsdon 177 No doubt these numbers need updating and other churches will have been knitting too.

Please send in your scores for the Grand Total! Churches have found different ways to share their cloths – with the message of our care for God's world and God's free gifts to us all.



Fillongley Green knitters

Earlsdon had a 'Great Green Giveaway' in early June. Many people stopped by to take a free plant- and a dishcloth.



The dishcloth label reads:
God loves the planet; so do we.
Let's go GREEN with these cotton dishcloths containing NO plastic.
Washable, re-usable, biodegradable.
With love from your Methodist neighbours
(These labels are available for you to use too....just let us know if you need a copy)

Autumn Recipes

In the next few editions of Circuit News, Christine Welham will be sharing a vegetarian recipe for you to try. We know that eating less meat is good for the environment. We welcome new ideas.



Circuit Gathering outdoors at Coombe Abbey, Saturday September 20th . Meeting at 11am . Bring a picnic. A gazebo will protect us from all weather and there will be opportunity for games.

Rev'd Ruth Wilson will share experience of 'Forest Church'.

Many of you will know Ruth – formerly of Woodside Avenue and now Minister in Redditch and Rowney Green. She is Pioneer Minister at Peckwood Forest Space.

Events happening around the Circuit

The **Methodist Church**
Coventry & Nuneaton Methodist Circuit

Welcome Service

For Rev Becki Stennett



at Coventry Central Hall

Thursday 4th September 2025 at 7pm

with bring and share food after the service



Great Green Gathering



Come and join us at this circuit outdoor
event
on
Saturday 20th September

Join us from 11:00 am
at the beautiful
Coombe Abbey

We will be led by the
Rev Ruth Wilson
in fellowship and worship

Bring a picnic,
the right clothes,
and a readiness to try something different

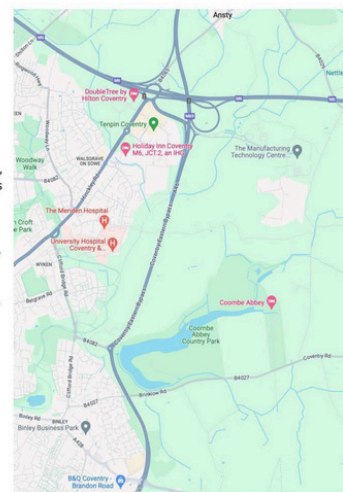
Coombe Abbey Outing

Let's meet together
outdoors!

We hope you can make it to meet up,
celebrate and share time together as
a circuit.

We will picnic together at midday.
You are, of course, welcome to arrive
earlier, we will be there from 11:00.
There is plenty to explore and it may
get crowded, and be more difficult to
park, later in the day.

Please let us have a contact number,
on the email below, so we know you
are coming. On the day we will send
you our location, via WhatsApp or
with a Google maps picture. If you
don't have a smartphone, we can
text you. If you don't have a mobile
phone let us know and we will make
time and place arrangements.



As you can see on the webpage Coombe Abbey is a beautiful place.

<https://www.coombeabbey.com/about/park-overview/>

However, there is open water and wild areas (trees, fallen logs, stinging nettles!). Remember, you are responsible for children you bring.

Most places can be accessed by a gravel path suitable for pushchairs and wheel chairs. There are plenty of benches to stop and admire the view. Do let us know if you have any issues with accessibility and we will see if we can help.

The park is located to the east of Coventry, off junction 2 of the M6, but not always well sign posted. Postcode is for SatNav CV3 2AB

There is a large car park and visitor centre with café, toilets and baby changing facilities.

It costs a maximum of £7 to park your car for the day. We are happy to cover the cost of parking, if necessary, but please try to car share!

worship@covnunmethodist.org.uk



Information received from The District Office

The launch and welcome service at the end of August is fast approaching! You can just turn up on the day but do book a ticket on this link to let us know you are coming and ensure that you are catered for after the service.

[eventbrite link](#)

Last chance to sign up for the choir... details are available on the website

<http://www.wmmethodists.org.uk> and sign up by emailing the Birmingham District office – office@birminghammethodist.org.uk.

District Launch and Chair's Welcome Service

Join us to celebrate the launch of the new West Midlands District and welcome our new Chair Rev'd Rachel Deigh.

Saturday 30th August
3pm followed by refreshments
Walsall Central Hall



The Methodist Church
West Midlands District



MAKING HOME INSURANCE COUNT.

METHODIST INSURANCE

Fund-raising for your church?

Methodist Insurance are offering 20% of your first year's home insurance,, to a charity of your choice, when you switch to them. Many Methodists have found them to be effective, responsive and affordable.

Information from Rev Clive Fowle that we have been asked to share with you

Save the Date! Saturday 4th October

Community for Reconciliation Footprints in partnership with Mediation and Community Support invite you to the book launch of
IN SPITE OF OUR DIFFERENCES, Healing the hurts of war.
By Clive Fowle MA.

Join Clive on his first journey to Osijek Croatia and read how he met local people being bridges for peace in their local communities, challenging the violence which led to the break-up of the former Yugoslavia.
In the book 'meet' Dušanka who pioneered the BENCH WE SHARE and read about the impact TOUCH OF HOPE workshops has had on Serbs and Croats and other nationalities.

Our peace worker Snježana from Osijek will be with us.

Rev Clive will be there to sign your book

Saturday 4th Oct at 2:30 to 4.30pm

Rugby Methodist Church Centre

Russelsheim Way, Rugby, CV22 7TB, England

To help with catering let us know if you are coming, but otherwise just turn up! Hvala. Thank you.

dornmargetts@aol.com.

Transform Conflicts, Transform Lives: Volunteer with Mediation and Community Support !



Are you passionate about helping others and making a real difference in your community? **Mediation and Community Support** is looking for dedicated **Volunteer Conflict Case Workers** from across Warwickshire!

We offer **free, comprehensive training** to equip you with the skills to help individuals and groups navigate and resolve difficult conflicts. Our cases are varied and rewarding, ranging from neighbour disputes to family disagreements, and you'll work in pairs, providing vital support to those in need.

Why Volunteer with Us?

- Make a real impact by empower people to find their own solutions and improve relationships.
- Receive free training which is AIM assured and will provide you with invaluable skills in communication, coaching, and mediation – useful in all areas of life!
- Flexible volunteering allows you to choose cases that fit your availability and location.
- Develop enhanced communication, listening, and problem-solving skills that benefit your personal and professional life.
- Join a supportive team and work alongside like-minded individuals, learn from new challenges, and be part of a caring community.

Who Are We Looking For?

If you're a clear communicator, empathetic, eager to learn, and can work as part of a team, we want to hear from you! You don't need prior experience – just a desire to help people!

Training Dates

The initial 6-day 'Conflict Transformation and Mediation' course will be on 17th, 18th, 19th, 24th, 25th and 26th September from 9.15am to 4.30pm each day. A further 8 shorter online sessions on 'Nonviolent Communication' will be arranged. The venue will be confirmed once you have registered.

Ready to Make a Difference?

Contact us for a chat! We're happy to answer your questions by phone, email or in person.
Email: admin@mediationsupport.org.uk or Clive Fowle clivefowle1@gmail.com
Phone: 07594653530

We look forward to hearing from you!

We are grateful to the 19 Warwickshire County Councillors who funded this training.

Company No. 5531882
Charity No. 1119338 Registered in England and Wales